

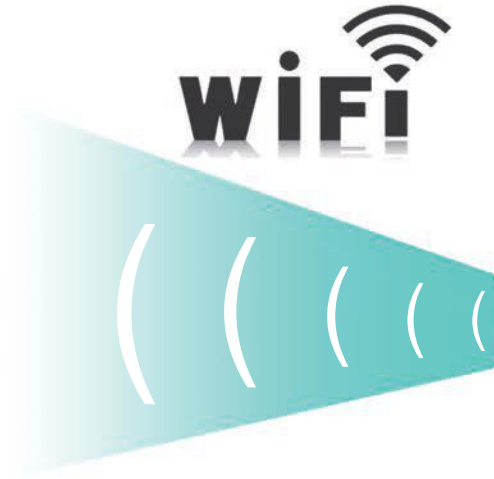
KONTED



C10CT

Convex Color Doppler

Pocket Ultrasound System



Frequency

Depth

Mode

Applications

3.5-5MHz

90-305mm

B Mode
 B+M
 PW Doppler
 Color Doppler
 Power Doppler

Abdominal
 Emergency Cardiac
 Urology
 Obstetrics / Gynecology,
 Lung
 Kidney

Download our ultrasound software from App Store or Google Play



- ✓ Unlimited users
- ✓ Free software
- ✓ No hidden fees
- ✓ Support printing reports
- ✓ Chinese, English, Russian, Italian
Spanish, Portuguese(Brazil)

Software Controls

GN(gain)
D(depth)
ENH(enhancement)
DR(dynamic range)
F(frequency)
FocusPos
PRF
WF
Mode
8TGC
Biopsy
Annote
Page left/right up/down

Measurement

B: Length, Area/Circumference,
Angle, Trace, Distance GA(CRL, BPD, GS, FL, HC, AC)
EFW(BPD, FL)
B+M: Heart Rate, Time, Distance
B+PW: Velocity, Heart Rate(2), S/D, Depth



Package includes:

1* wireless probe

1* wireless charger

1* USB charger

1* wrist strap

1* plug

1* portable aluminium alloy box

Connection Type

WiFi (802.11n/20MHz/5G/450Mbps)

Probe built-in WiFi signal

Supporting Devices

Tablet, Smart phone, PC, etc

Working system

Android, IOS, Windows

Image save

jpg, avi, Mp4 and DICOM format

Buttons

3 programmable buttons

Lithium Battery

4200 mAh. 3.8V Support wireless charging

Working time: ≥3h, Standby time: ≥12h

Battery life 5-8years

Dimensions

158(h)x70(w)x30(d) mm

Net weight 239g

Elements 192

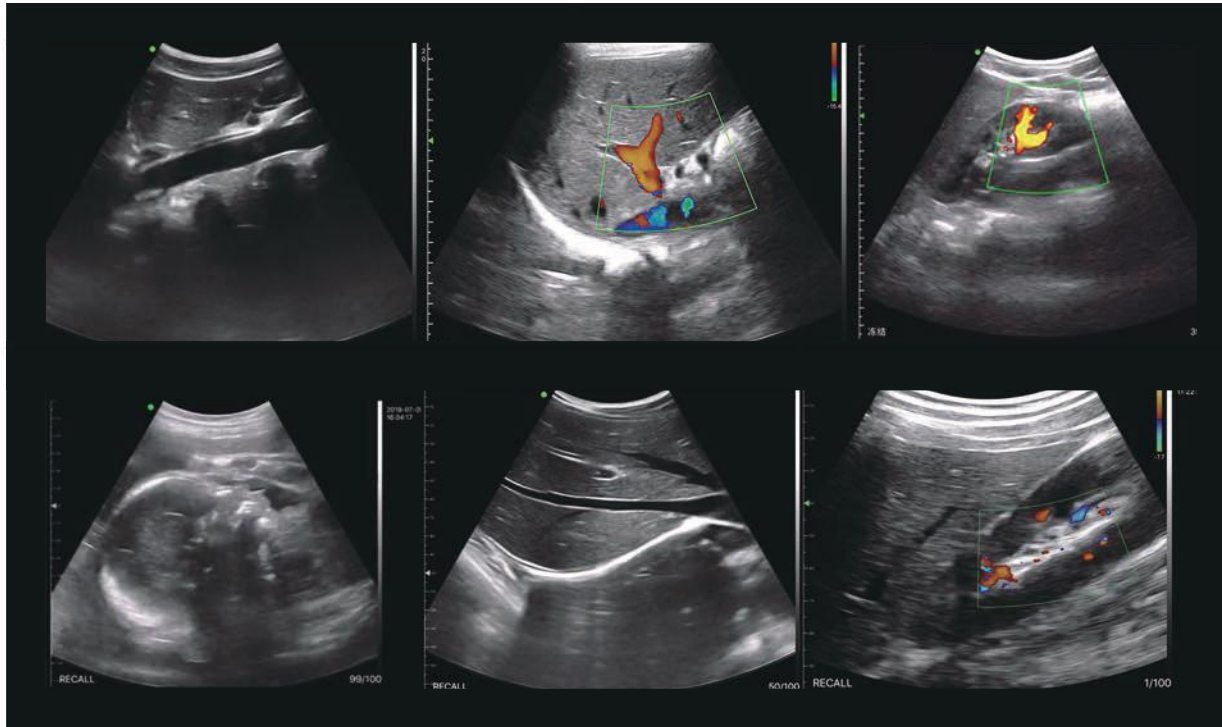
Footprint R60

Boot-up

Platform dependent, generally <5 seconds



Offer great images to everyone





- * **Training how to install the machine, training how to use the machine.**
- * **Spare parts replacement and other software/hardware trouble shooting**
- * **Offer OEM&ODM service for distributors**
- * **Offer SDK depends on different models**
- * **Free software and free upgrade the software**
- * **18 Months Warranty, extendable up to 3 years**

BEIJING KONTED MEDICAL TECHNOLOGY CO.,LTD

Tel:8610-60219113

Fax:8610-60219213

Service and Cooperation :info@konted.cn

Website:www.konted.cn

Facebook: Beijing Konted

Youtube: Medical Konted

Address: Room 111,1F, Building 3, No. 27 Yongwang Road,Daxing Biological Pharmaceutical Industry Base,Daxing District,Beijing 102629,China.